

# The Spotlight

## What's Inside

- AMI & Meter Reading Update
- PIE&G Connect Fiber Internet
- 87th Annual Meeting Invite
- Sign Up for Our Budget Plan



• Owned by Those We Serve • Locally Controlled • Committed to Community • Not for Profit •

## September 2024

## AMI & Meter Reading

We have been working diligently to update our metering system to AMI (Advanced Metering Infrastructure). Having an AMI system means we can obtain meter readings digitally without requiring members to read their meters.

- **Electric:** We have successfully updated 97.5% of our electric meters to an AMI system. Please note, as we transition your account, your monthly bill may be larger at first; this is to get you on the AMI reading and billing schedule. All remaining bills will be back to a ~30-day cycle.
- **Gas:** We will begin updating our gas metering system in early 2025. Since gas meters have not yet been updated to AMI, we still need members to send in their gas readings. If you have boxes on your gas bill, please send in your monthly gas reading until you see the boxes removed from your bill. To send in your meter reading: return the stub at the bottom of your bill, submit your reading via SmartHub, or call in your reading using our IVR system at 866-999-4571.



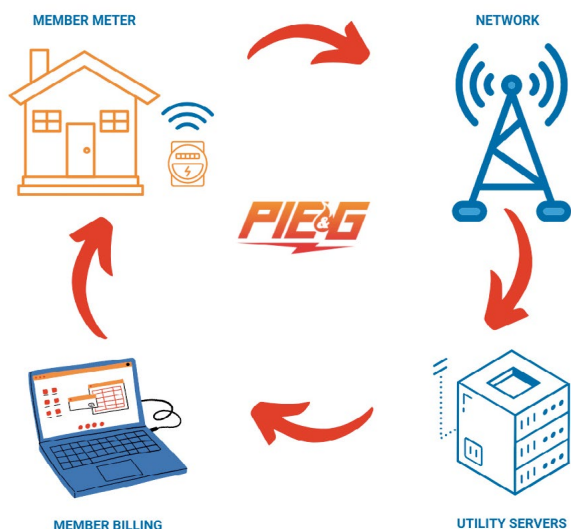
**PIE&G  
Connect**  
Powered by PIE&G

**PIE&G Connect** isn't just another internet provider. Our fiber network is built for our community by

those who live in our community. Here's what sets us apart from other providers:

- There are no surprise fees, add-on costs, or ballooning introductory rates.
- We offer symmetrical speeds. Symmetrical speeds are precisely what they sound like, speeds with equal download and upload speeds. For example, with a 500/500 Mbps fiber internet connection, you get up to 500 Mbps of download AND up to 500 Mbps of upload speeds.
- We offer \$5 off your PIE&G Connect fiber internet bill when you sign up for autopayment.
- Wi-Fi is free with PIE&G Connect. You pay for fiber internet, which includes the Wi-Fi Gigaspire U6x router. Wi-Fi is a wireless connection that allows devices to access the Internet. Most providers charge you for the router, which creates your Wi-Fi connection, but we do not.
- All our plans include easy network management, network security, and parental control through our free PIE&G Connect IQ app.

## HOW DOES AMI WORK?

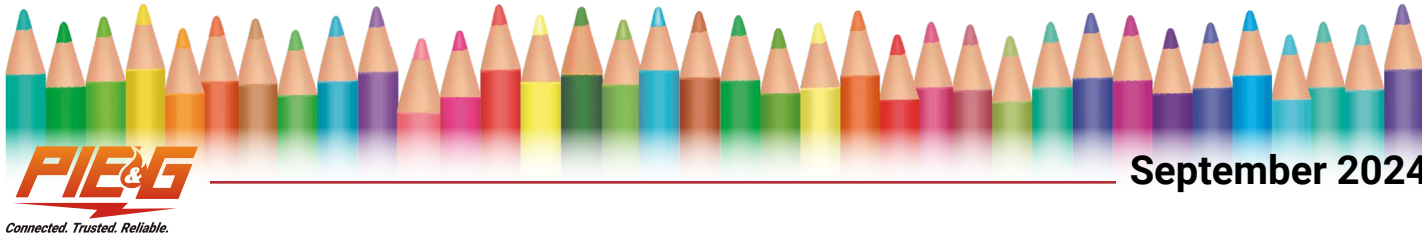


## 87th Annual Meeting

Our annual membership meeting will be held on November 1st at Posen High School. Registration begins at 8:30 am. The general business session, where various reports will be discussed, starts at 10 am. The meeting concludes with the director election results. Lunch will be provided after the meeting. For more information about the meeting and your director candidates' ballot, please refer to the September issue of Country Lines, which will be mailed after Labor Day.

We look forward to seeing you there!





September 2024

## Sign Up for Our Budget Plan

You can't predict Michigan's weather, but you can count on PIE&G's Budget Plan to help keep your energy costs steady all year round. The Budget Plan lets you spread out your annual energy costs into equal monthly payments. It's a great way to help manage your household budget. The Budget Plan\* starts each October and runs through September. Your monthly budget bill is estimated for the coming year based on your previous 12 months of usage history. The annual total is averaged into 11 equal payments. For the 12th month (September), any differences from the budget and actual usage are reconciled. The September bill will include catch-up charges if you used more energy than what you paid during the budget year. If you used less energy than your budgeted billing and overpaid, you'll receive a credit on your September bill.

If you are already enrolled in the Budget Plan and are paid in full, there is no need to take any action; your enrollment will continue. If you are enrolled in the auto payment plan, please review your September bill before the due date to ensure sufficient funds are available to cover your reconciliation balance, which may be higher than your usual budget payment.

*\*Eligibility requirements apply. Members participating in assistance programs, such as the Winter Protection Plan, are not eligible for the Budget Plan.*

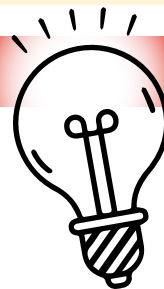
## ENERGY EFFICIENCY tip of the month

### Home Heating Check Up

Now is the time to schedule annual maintenance for your home's heating system. During fall months, HVAC technicians are typically less busy, making this an excellent time for maintenance and any necessary repairs before the winter months.

A qualified technician can clean filters, check for leaks and ensure all system components are working efficiently to keep your home cozy and warm when the temperatures begin to drop.

Source: [energystar.gov](http://energystar.gov)



# Save energy & reduce costs on the farm.



Visit [pieg.com/eo](http://pieg.com/eo) | Call 877-296-4319

## Earn Rebates for Upgrading to Efficient Equipment

Presque Isle Energy Optimization programs and rebates are applicable to Presque Isle Electric & Gas Co-op electric service locations only. The Residential Income Qualified Services program serves single-family and multi-family households with incomes at or below 80 percent of Area Median Income (AMI) guidelines. Rebate applies to qualified items purchased and installed between January 1, 2024 and December 31, 2024. Other restrictions may apply. For complete program details, visit [pieg.com/eo](http://pieg.com/eo).

## Presque Isle Electric & Gas Co-op

- Owned by Those We Serve •
- Locally Controlled •
- Committed to Community •
- Not for Profit •

3149 Main Street  
P.O. Box 308  
Onaway, MI 49765

989-733-8515  
800-423-6634  
[www.pieg.com](http://www.pieg.com)

**GAS EMERGENCY ONLY**  
800-655-8565

We will gladly accept your Visa, MasterCard, Discover or American Express.

No additional charge for using your credit card.

**We offer many convenient ways to pay! Learn more:**



SCAN ME