

# The Spotlight



## What's Inside

- Call MISS DIG Before You Dig
- Annual Meter Readings Start Soon
- Right Tree, Right Place



May 2022

## CALL MISS DIG BEFORE YOU DIG!



MISS DIG System, Inc. of Michigan, is a statewide one-call excavation safety and utility damage-prevention company. Its mission is to safeguard the public, environment, property, and utility infrastructures and prevent utility damage through a quality, cost-effective process.

Call MISS DIG **BEFORE YOU DIG** at 1-800-482-7171 or 811. You must call at least three (3) full working days in advance of any work. There is no cost for this service.

PIE&G will work with you through the MISS DIG system, to provide overhead electric line assistance to ensure adequate clearances are maintained and to

locate and mark the approximate location of our underground utility lines and pipes.

If our electric or natural gas lines are damaged, however, you must contact us immediately at 1-800-423-6634. You may be held responsible for damages.

## ANNUAL METER READINGS BEGIN IN MAY

Over the next three months, PIE&G Meter Readers will begin reading electric and/or natural gas meters for our annual verification. Personnel will carry a PIE&G identification badge.

To help make this annual process easier, we ask that you:



- ❑ Please have animals leashed and away from the meter location or inside.
- ❑ Make sure the meter is clear from obstructions and is easily accessible for our meter readers.

### PIE&G Meter Reading Schedule By County:

- ❑ MAY: Cheboygan, Emmet, Mackinac
- ❑ JUNE: Alpena, Alcona, Presque Isle
- ❑ JULY: Montmorency, Oscoda, Otsego

*Thank You For Your Cooperation!*

## INTERESTED IN SERVING YOUR CO-OP?

### *Consider the Board of Directors Elections*



Have you ever thought about serving on the PIE&G Board of Directors? Each year three positions on the Board are up for election. PIE&G's

bylaws allow for nominations to be made by the Nominating Committee, by petition of 15 or more members, or by nomination from the floor at the annual meeting held in October.

In 2022, two directors from the Alpena district will be elected and one from the Presque Isle district.

To be considered by the Nominating Committee, interested members should submit a letter of interest and résumé to **PIE&G, ATTN: Nominating Committee, PO Box 308, Onaway, MI 49765** by June 15th. All letters will be submitted to the Nominating Committee for their review and nominations will be made in July. For more information, please contact the co-op.





Connected. Trusted. Reliable.

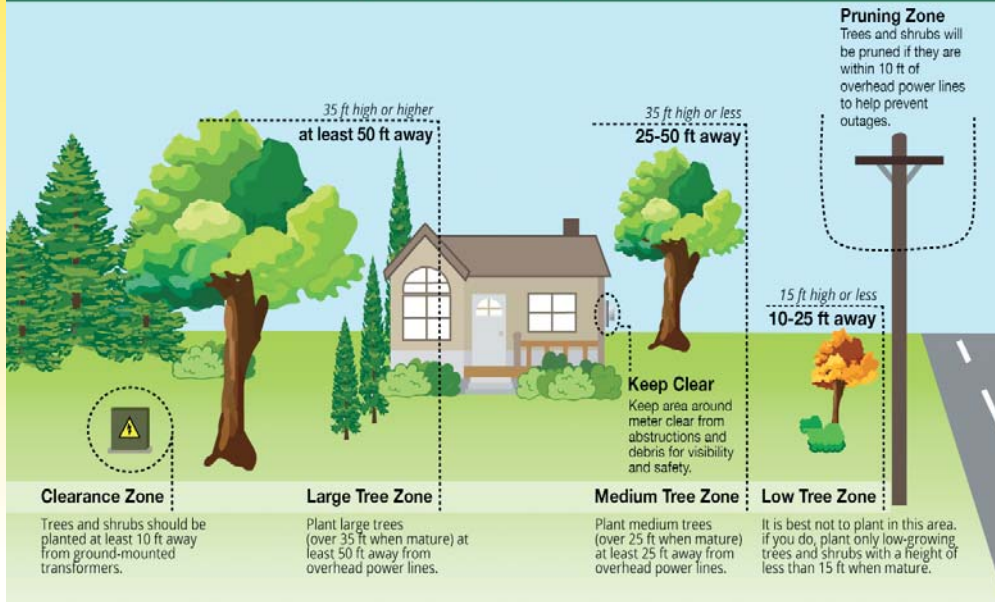
Owned By Those We Serve . . . Locally Controlled . . . Committed to Community . . . Not For Profit

May 2022



# RIGHT TREE, RIGHT PLACE!

Before planting new trees to improve the look of your yard, you will need to keep a few things in mind.



## Have a Safe & Happy Memorial Day Weekend!

Presque Isle Electric & Gas Co-op will be closed for business to observe Memorial Day on Monday, May 30. Payments may be made at the drop box, with SmartHub online at [pieg.com](http://pieg.com) or by mobile app, or by calling 1-866-999-4571.

**In case of emergencies, call 1-800-423-6634.**

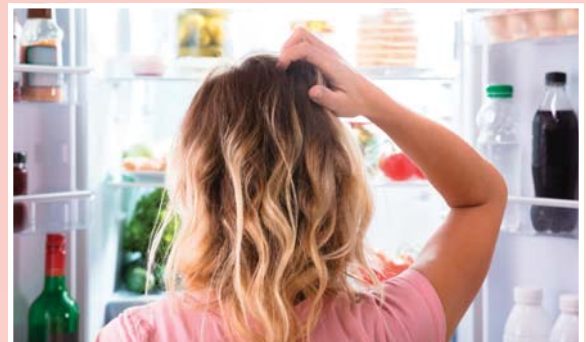


## OUT WITH THE OLD; SPRING FOR THE NEW

It's time for spring cleaning – and that means taking a closer look at the “extra” refrigerator in the basement or garage. It's been great for storing the overflow of soda cans, water bottles, and holiday leftovers over the years, but if it's older than 15 years, it may be costing you more than \$300 per year to run it!

### Cold, hard facts

- More than 60 million refrigerators and refrigerator-freezers in the U.S. are over ten years old, costing consumers \$4.4 billion a year in energy costs.
- An older refrigerator uses twice as much energy as a new ENERGY STAR® refrigerator.
- Recycling old refrigerators prevents refrigerants and foam from entering the environment, preventing 10,000 pounds of carbon pollution.



## Time to upgrade?

**An outdated refrigerator uses nearly twice as much energy as a new ENERGY STAR® certified model.**

### Recycle it & earn cash incentives!

- ▶ Refrigerator: \$25 rebate
- ▶ Window Air Conditioner: \$25 rebate (ride-along item)
- ▶ Chest Freezer: \$25 rebate
- ▶ Dehumidifier: \$25 rebate (ride-along item)

### Presque Isle Electric & Gas Co-op

3149 Main Street • P.O. Box 308 • Onaway, MI 49765

989-733-8515 • 800-423-6634 • [www.pieg.com](http://www.pieg.com)

**GAS EMERGENCY ONLY 1-800-655-8565**

*We will gladly accept your Visa, MasterCard, Discover or American Express.*

*No additional charge for using your credit card.*



### SCHEDULE A FREE PICKUP

CALL: 877.296.4319



INCENTIVES AVAILABLE FOR NEW APPLIANCES

VISIT: [pieg.com/eo](http://pieg.com/eo)

Presque Isle Energy Optimization programs and incentives are applicable to Presque Isle Electric & Gas Co-op electric service locations only. Incentive applies to qualified items purchased and installed between January 1, 2022 and December 31, 2022. Other restrictions may apply. For complete program details, visit [pieg.com](http://pieg.com).