

# The Spotlight



## What's Inside

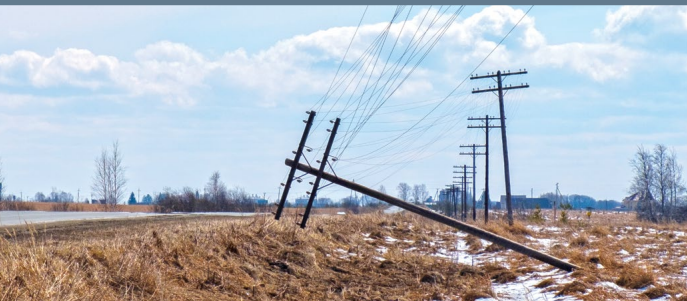
- Grant Awarded to Alpena County Sheriff's Department
- Stay Safe During Spring Storms
- Portable Generator Operation

March 2024

### COMMUNITIES FIRST FUND

Thank you to our members for your contributions; they make a difference. The PIE&G Communities First Fund Board of Directors, at its September 13 meeting, awarded a grant of \$4,500 to the Alpena County Sheriff's Department for the Identifying and Intercepting School Violence Through Cyber Investigations training project.

Pictured (left to right): Undersheriff Cash Kroll, Detective Rich Wistocki (trainer), Communities First Fund Director Tammy Bates, Sheriff Eric Smith, and PIE&G CEO Tom Sobek.



### BE PREPARED FOR SPRING STORMS

Spring brings the beauty of blossoming flowers and warmer days, but also ushers in the season of thunderstorms. Did you know that lightning from these storms claims more lives annually than tornadoes or hurricanes?

To ensure your safety during spring's unpredictable weather, the American Red Cross offers these valuable tips:

- 1. Stay Clear of Downed Power Lines:** Treat every downed power line as energized because it can still carry electricity. Immediately report any fallen lines to PIE&G at 1-800-423-6634.
- 2. Heed Thunder:** If you hear thunder, take it as a sign to head indoors. Lightning poses a danger if you hear thunder; it's advised to stay inside for at least 30 minutes after the last clap. Avoid high ground, water, tall, isolated trees, and metal objects like bleachers or fences when caught outside without shelter.
- 3. Unplug Electronics:** Prevent power surges by avoiding electrical items and telephones during storms. Keep a battery-powered T.V. or radio on hand for weather updates.
- 4. Delay Outdoor Activities:** Thunderstorms can still occur even if it's not raining. The National Weather Service recommends postponing outdoor activities like sports games when storm conditions are favorable. Remember, lightning doesn't need rain to strike.

Stay safe this spring by following these precautions during thunderstorms. Your safety is our priority!

#### Assemble an Emergency Kit - Be prepared with these essential items in case of an emergency:

- One gallon of water per person per day
- Non-perishable, ready-to-eat foods
- Manual can opener
- Flashlight with fresh batteries
- Cell phone with charger
- Battery-powered or hand-crank radio (preferably NOAA weather radio) with extra batteries
- First-aid kit
- A seven-day supply of prescription medicine
- Copies of personal documents
- Emergency contact information
- Cash

Owned By Those We Serve . . . Locally Controlled . . . Committed to Community . . . Not For Profit



Connected. Trusted. Reliable.

Owned By Those We Serve . . . Locally Controlled . . . Committed to Community . . . Not For Profit

### STAY SAFE WITH PORTABLE GENERATORS

Portable electric generators can be a valuable power source, but their safe use is paramount. Mishandling these devices can lead to dangerous situations. Always exercise caution when operating generators.

One crucial rule: **Do not directly connect generators to household wiring.** The power generated can back-feed into power lines posing a severe electrocution risk to anyone, including utility line workers, who may come into contact with them. To ensure safe installation, it's essential to enlist a qualified and licensed electrician who can install your generator in compliance with local electrical codes.

Here are some additional safety tips for portable generators:

- Ensure your generator is properly grounded.
- Keep the generator away from moisture or water sources.
- Regularly inspect extension cords to verify they are rated for the load, free from cuts, have worn insulation, and have three-pronged plugs.
- Avoid overloading the generator by respecting its capacity limits.
- Never operate the generator in enclosed or partially enclosed spaces. Generators can quickly produce lethal levels of carbon monoxide.
- Consider using a ground fault circuit interrupter (G.F.C.I.) to reduce the risk of electrocution and electrical shock injuries.

By adhering to these safety guidelines, stay safe while enjoying the benefits of portable generators. Your well-being is our priority!



## UPGRADE TO A HEAT PUMP DRYER

EARN A \$200 REBATE ON QUALIFYING MODELS

VISIT [pieg.com/eo](http://pieg.com/eo) • CALL 877-296-4319

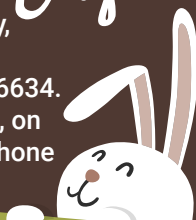


Presque Isle Energy Optimization programs and rebates are applicable to Presque Isle Electric & Gas Co-op electric service locations only. Rebate applies to qualified items purchased and installed between January 1, 2024 and December 31, 2024. Other restrictions may apply. For complete program details, visit [pieg.com/eo](http://pieg.com/eo).

### HOLIDAY OFFICE CLOSURE

happy Easter

PIE&G's office will be closed on Good Friday, March 29. Report outages or natural gas emergencies anytime by calling (800) 423-6634. Access your accounts anytime at [pieg.com](http://pieg.com), on our SmartHub mobile app, or with Pay by Phone at (866) 999-4571.



### Presque Isle Electric & Gas Co-op

3149 Main Street • P.O. Box 308 • Onaway, MI 49765  
989-733-8515 • 800-423-6634 • [www.pieg.com](http://www.pieg.com)

**GAS EMERGENCY ONLY 1-800-655-8565**

*We will gladly accept your Visa, MasterCard, Discover or American Express. No additional charge for using your credit card.*

