

# The Spotlight

## What's Inside

- CAPITAL CREDITS UPDATE
- JMAP GRADUATES
- SUMMER STORM SAFETY



• Owned by Those We Serve • Locally Controlled • Committed to Community • Not for Profit •

July 2025

## Important Capital Credits Update: A Stronger Financial Future Together!

Capital credits are your contribution to our cooperative's growth and development. They're retired and refunded when our board of directors is confident it won't harm our financial stability. Until then, these allocated, unretired margins serve as your way of directly supporting our operations, enabling us to fund essential projects, expand our services, and reduce borrowing and interest expenses.

This year, our board of directors has decided to maintain these credits within the cooperative. Why, you ask? It's all about securing our financial foundation. This decision ensures we can continue to grow and deliver top-notch services without compromise.

Your commitment and support empower us to thrive as a cooperative, ensuring a bright and prosperous future for all of us.

## Summer Storm Preparedness

Summer is a time for sunshine, grilling, boating, and enjoying the outdoors, but it also brings the risk of severe storms. Presque Isle Electric & Gas Co-op's crews are ready to respond quickly and safely when outages occur, and we encourage you to be prepared, too.

A few key tips:

- Keep a 3-day supply of non-perishable food, water, and essentials.
- Stock hygiene items, flashlights, batteries, a manual can opener, and a first aid kit.
- Store supplies in one easy-to-access location.
- Turn off major appliances during an outage but leave one light on to know when power is back.
- If you use a generator, follow the manufacturer's instructions and never operate it indoors.

Always assume downed lines are energized and stay far away. For updates, follow PIE&G on Facebook or visit [pieg.com/outage-center](http://pieg.com/outage-center). To report an outage, call **1-800-423-6634** or use the **MYPIE&G** app—don't report it on social media.

## Congratulations to Our Newest JMAP Graduates!

Please join us in congratulating four of our own PIE&G lineworkers—Dylan Edgar, Jesse Haske, Isaac McDonald, and Zachary Taylor—on their graduation from the Joint Michigan Apprentice Program (JMAP).

JMAP is a partnership between Wolverine Power Cooperative, IBEW Local 876, and Northwest Lineman College, a leader in utility training nationwide.

Completing the program is a major accomplishment, requiring 3.5 to 4 years, 320 hours of classroom instruction, and 7,000 hours of hands-on training.

We're incredibly proud of their dedication, hard work, and commitment to serving our members. Congratulations on reaching this important career milestone!



*Pictured left to right: Samuel Braun, Eric Leach, Isaac McDonald, Zachary Taylor, Jesse Haske, Dylan Edgar, Richard Crane.*



## Thank You, Colleen Korte, for 40 Years of Dedicated Service

Congratulations to Colleen Korte on her retirement from Presque Isle Electric & Gas Co-op after 40 years of loyal and dedicated service. Ms. Korte began her employment with Presque

Isle Electric & Gas Co-op on August 12, 1985, starting as a General Secretary and becoming an Assistant Cashier on October 8, 1985. She became a Billing Supervisor on January 21, 1991, and then a Work Order Clerk on March 1, 2001. Colleen remained in that position until her retirement on June 2, 2025.

## Small Change, Stronger Communities

The PIE&G Communities First Fund has supported local organizations since 1998, funding vital projects for emergency responders, youth programs, and more.

You can help by rounding up your utility or fiber bill—a few cents a month can change lives! On average, members contribute only about 50 cents monthly, totaling around \$6 each year, and every donation is tax-deductible.

Join us in giving back! Sign up today by printing the enrollment form or calling Member Services at 1-800-423-6634. Together, we can make a BIG difference—over \$1.5 million has already been returned to northeast Michigan!

### We Trees, Too.

We know everyone in our community enjoys the beauty and shade trees provide. But trees and power lines can be a dangerous mix without regular trimming during the growing season.

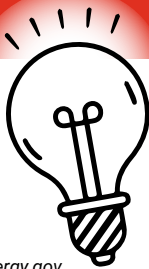
**If you see us out in the community trimming, remember the many benefits it brings:**

- Keeps power lines clear of tree limbs
- Helps us restore power outages more quickly
- Keeps crews and members of our community safe
- Reduces unexpected costs for repairs

**Trimming improves service reliability for you, the members we serve.**

## ENERGY EFFICIENCY tip of the month

During summer months, run large appliances that emit heat, such as clothes dryers and dishwashers, in the evening when the outdoor temperature is lower. Running heat-emitting appliances in the evening will reduce indoor heat gain during the day when outdoor temperatures are highest and ultimately keep your air conditioner from working harder than necessary.



Source: energy.gov



## Drive home the savings with an EV!

Enjoy stable fuel costs, reduced maintenance, improved performance, convenient home charging, and rebates from the Energy Optimization program.

**REBATES AVAILABLE FROM \$300 - \$1,500**

[pieg.com/eo](http://pieg.com/eo) • (877) 296-4319



Presque Isle Energy Optimization programs and rebates are applicable to Presque Isle Electric & Gas Co-op electric service locations only. Rebate applies to qualified items purchased and installed between January 1, 2025 and December 31, 2025. Other restrictions may apply. For complete program details, visit [pieg.com/eo](http://pieg.com/eo).

## Reminder to Call MISS DIG



Before you start any digging project—big or small—you need to call MISS DIG. Whether you're planting a tree, installing a fence, or working on a home project, underground utility lines could be just inches below the surface. Calling 811 protects you, your property, and your community from costly damage and serious injury. It's free, easy, and required by law.

## Presque Isle Electric & Gas Co-op

- Owned by Those We Serve •
- Locally Controlled •
- Committed to Community •
- Not for Profit •

3149 Main Street  
P.O. Box 308  
Onaway, MI 49765

1-989-733-8515  
1-800-423-6634  
[www.pieg.com](http://www.pieg.com)

**GAS EMERGENCY ONLY**  
1-800-655-8565

We will gladly accept your Visa, MasterCard, Discover or American Express.

No additional charge for using your credit card.

**We offer many convenient ways to pay! Learn more:**



**SCAN ME**