

# The Spotlight



## What's Inside

- PIE&G Connect Hits 3000
- Scholarships for High School Seniors Due 3-1-24
- Members' Published Recipes

January 2024



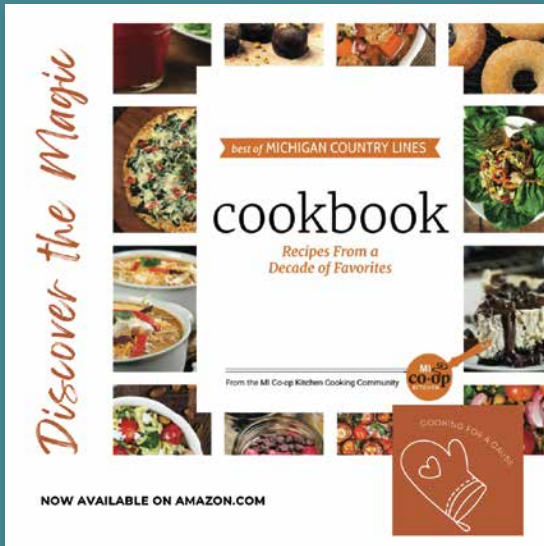
**PIE&G  
Connect**  
Powered by PIE&G

## PIE&G CONNECT HITS 3000<sup>TH</sup> MEMBER CONNECTION MILESTONE!

PIE&G Connect is thrilled to announce a major milestone in our high-speed fiber project. As of September 2023, we've entered Phase 2 of our project, covering areas including Onaway, Canada Creek, Black Lake, and more. Currently, we've laid down an impressive 1,099 miles of fiber, with plans to expand into Millersburg, Hawks, and Hagensville soon.

"High-speed internet has had a transformative impact on our communities, offering access to educational resources, remote work opportunities, telemedicine, and much more," says CEO Tom Sobek.

This comprehensive fiber project is on track to span around 3,220 miles across the regions served by our cooperative. To learn more about PIE&G Connect and its services, visit [piegconnect.com](http://piegconnect.com).



*Introducing the "Best of Michigan Country Lines Cookbook" featuring top recipes from the past ten years. Available exclusively on Amazon featuring recipes from the following Presque Isle Electric & Gas Co-op Members:*

*Bethany Cumper • Shannon Libich • Pamela Blamer  
Rebecca Cronk • Tonya Langlois • Tanya Blackmer  
Katherine Howell • Sharron Fromius • Jennie Lewandowski*

Michigan Country Lines, a nonprofit, is committed to giving back. Proceeds from cookbook sales will support two Michigan charities:

1. Feeding America local food banks - Ensuring food security for those in need.
2. Cooperative Family Fund - Providing vital support to children of cooperative employees who've lost a parent while employed.

Order yours today at [Amazon.com](http://Amazon.com).

## PIE&G COMMUNITIES FIRST FUND IN ACTION

In December, we presented a check to Rogers City Elementary School for a \$1,000 Communities First Fund Grant.

Thank you to our members for your contributions; it makes a difference.

Learn more about the Communities First Fund at [pieg.com/communities-first](http://pieg.com/communities-first).



**Owned By Those We Serve . . . Locally Controlled . . . Committed to Community . . . Not For Profit**



Connected. Trusted. Reliable.

Owned By Those We Serve... Locally Controlled... Committed to Community... Not For Profit



### SCHOLARSHIPS FOR GRADUATING SENIORS

*Applications due by March 1, 2024*

The PIE&G Communities First Fund has been awarding scholarships to graduating high school seniors since 1999. The scholarship program includes all accredited colleges or universities located in Michigan. The award is \$1,000 and payable upon successfully completing the first semester.

Four other scholarships are available:

- The A. Barkley Travis Memorial Scholarship (\$500)
- The Peterson Vocational School Scholarship (\$500)
- The Murville & Caroline Douglas Musical Scholarship (\$500)
- The Nathan W. Douglas Scholarship (\$500)

Eligibility requirements and applications are available online at [pieg.com](http://pieg.com) or by contacting PIE&G at 1-800-423-6634 and selecting extension 1011. Completed applications with all supporting documentation must be received by 4:30 pm on Tuesday, March 1, 2023. Scholarships will be awarded by June 1st.

**Just a friendly reminder! For updated contact info, call us at 1-800-423-6634. It's crucial for power outage updates and emergencies!**

## Save Energy & Money in the New Year

With PIE&G's Energy Optimization Program

140+ Rebates Available

RESIDENTIAL	COMMERCIAL
Appliances	Compressed Air
HVAC	Lighting
Lawn Equipment	Non-Lighting
Electric Vehicles	Farm Equipment
And More!	Custom Projects



VISIT [pieg.com/eo](http://pieg.com/eo) • CALL 877.296.4319

Presque Isle Energy Optimization programs and rebates are applicable to Presque Isle Electric & Gas Co-op electric service locations only. Rebate applies to qualified items purchased and installed between January 1, 2024 and December 31, 2024. Other restrictions may apply. For complete program details, visit [pieg.com/eo](http://pieg.com/eo).

### Presque Isle Electric & Gas Co-op

3149 Main Street • P.O. Box 308 • Onaway, MI 49765 • 989-733-8515 • 800-423-6634 • [www.pieg.com](http://www.pieg.com)

**GAS EMERGENCY ONLY 1-800-655-8565**

*We will gladly accept your Visa, MasterCard, Discover or American Express. No additional charge for using your credit card.*

