

The Spotlight



A Touchstone Energy® Cooperative

What's Inside

- Annual Meeting Oct. 26
- Capital Credit Refunds Coming Soon
- Fall Furnace Check Up

October 2018

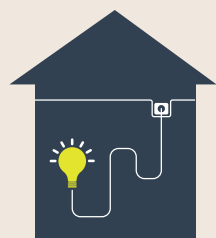
Plan to Attend PIE&G ANNUAL MEMBERSHIP MEETING

- **Friday, October 26 at Onaway High School**
- **Registration: 8:30 a.m. - 10 a.m.**
- **Meeting: 10 a.m. - 11:30 a.m.**
(Followed by lunch)



See your September-October issue of *Country Lines* for your mail-in ballot for elections to the board of directors.

NOTE: All mail-in ballots must be received by October 19, 2018.



LOW INCOME ENERGY ASSISTANCE FUND (LIEAF) CHARGE

Gov. Snyder signed into law Public Act 95 in 2013, creating the Low Income Energy Assistance Fund or "LIEAF", authorizing the Michigan Public Service Commission (MPSC) to raise up to \$50 million annually for low income energy assistance payments. The money would come from a surcharge of no more than \$1 per meter per month for all Michigan electric utilities participating in the LIEAF program.

On July 24, 2018, the MPSC issued an order that the monthly surcharge shall remain at 93 cents per meter for the September 2018 through August 2019 billing months. The surcharge is limited to electric bills only and to one electric residential meter per residential site. The surcharge is effective on PIE&G's electric bills generated on or after October 1, 2018, for service rendered in September. Annual bills will be prorated accordingly.

CAPITAL CREDIT REFUNDS COMING SOON



If you received electric service from PIE&G in

1986-87 and 2000-02, you will soon receive your capital credit refund check. The amount of your refund is proportionate to the energy you purchased during those years. **Checks are expected to be mailed by the last week of October.**



OCTOBER IS NATIONAL COOPERATIVE MONTH

Stop by PIE&G in October to help us celebrate national cooperative month.

We appreciate you!

Owned By Those We Serve . . . Locally Controlled . . . Committed to Community . . . Not For Profit

October 2018



A Touchstone Energy® Cooperative

Owned By Those We Serve . . . Locally Controlled . . . Committed to Community . . . Not For Profit

FALL FURNACE CHECKUP

Stay warm, stay safe and save energy

An annual checkup of your furnace by a licensed heating contractor can help reduce your heating costs and is one of the best ways to help prevent deadly carbon monoxide poisoning.

A checkup now can keep you from waking up in the middle of the night to a cold house later. It could also save lives. Here are other easy ways to help keep your furnace running safely and efficiently all winter.

- Check for rust and corrosion on the vent pipe connected to the chimney.
- Check flues or vents for cracks and obstructions.
- Check the filter once a month and replace it if it is worn or dirty.
- Check the owner's manual to see if the blower motor should be lubricated.

For more tips, visit
energystar.gov.



SAVE ON HEATING COSTS

Upgrade your HVAC equipment to save energy and receive cash incentives!

ONLINE: michigan.energy.org PHONE: 877.296.4319



Presque Isle Electric & Gas Co-op

19831 M-68 Hwy • P.O. Box 308 • Onaway, MI 49765 • 989-733-8515 • 800-423-6634 • www.pieg.com

GAS EMERGENCY ONLY 1-800-655-8565

We will gladly accept your Visa, MasterCard, Discover or American Express. No additional charge for using your credit card.



Most natural gas rates and charges are not regulated by the Michigan Public Service Commission.