

The Spotlight



A Touchstone Energy® Cooperative

What's Inside

- Annual Meeting is Oct. 28
- Capital Credit Refunds Coming
- Fall Furnace Check Up
- Appliance Recycling Rebates

October 2016



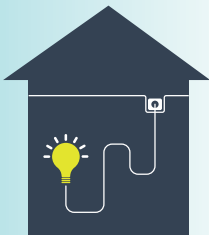
Plan to Attend the PIE&G ANNUAL MEETING

Friday, October 28 at Onaway High School
Meeting begins at 10:00 a.m. – Doors open at 8:30 a.m.

Your September-October issue of *Country Lines* contains your mail-in ballot for the Board of Director election.

Note that all mail-in ballots must be received at PIE&G by October 21, 2016.

LOW INCOME ENERGY ASSISTANCE FUND (LIEAF) CHARGE



On July 1, 2013, Gov. Snyder signed into law Public Act 95, creating the Low Income Energy Assistance Fund or "LIEAF", authorizing the Michigan Public

Service Commission (MPSC) to raise up to \$50 million annually for low income energy assistance payments. The money would come from a surcharge of no more than \$1 per meter per month for all Michigan electric utilities participating in the LIEAF program.

On July 22, 2016 the MPSC issued an order reducing the monthly surcharge from 98 cents to 96 cents per meter for the September 2016 through August 2017 billing months. The surcharge is limited to electric bills only and to one electric residential meter per residential site. The decrease will be effective on PIE&G's electric bills generated on or after Oct. 1, 2016, for service rendered in September. Annual bills will be prorated accordingly.



OCTOBER IS NATIONAL COOPERATIVE MONTH

Stop by to visit us at PIE&G in October and celebrate national cooperative month.

CAPITAL CREDIT REFUNDS COMING SOON

If you received electric service from PIE&G in 1984 or in 1986 through 1988, you will soon receive your capital credit refund check. The amount of your refund is proportionate to the energy you purchased during those years. **Checks will be mailed the last week of October.**

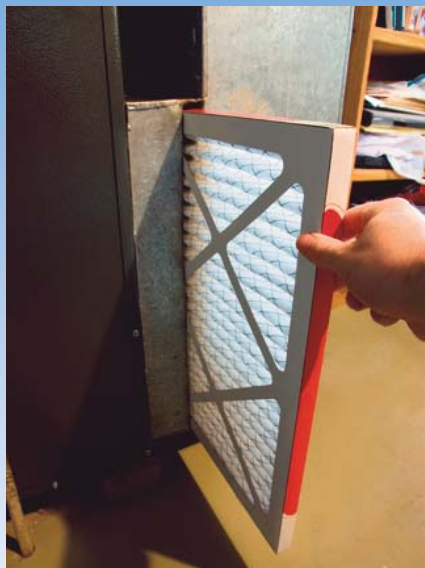


October 2016



A Touchstone Energy® Cooperative

Owned By Those We Serve ... Locally Controlled ... Committed to Community ... Not For Profit



FALL FURNACE CHECK UP

Stay warm, stay safe and save energy

An annual checkup of your furnace by a licensed heating contractor can help reduce your heating costs and is one of the best ways to help prevent deadly carbon monoxide poisoning.

A checkup now can keep you from waking up in the middle of the night to a cold house later. It could also save lives. Here are other easy ways to help keep your furnace running safely and efficiently all winter.

- Check for rust and corrosion on the vent pipe connected to the chimney.
- Check flues or vents for cracks and obstructions.
- Check the filter once a month and replace it if it is worn or dirty.
- Check the owner's manual to see if the blower motor should be lubricated.



For more tips, visit energystar.gov



Ready to upgrade or get rid of an old refrigerator or freezer?

Recycle it and save! Earn cash incentives for recycling your old, functioning appliances.

- Refrigerator = \$50
- Dehumidifier (ride along item) = \$15
- Freezer = \$50
- Window Air Conditioner (ride along item) = \$15

Contact the Energy Optimization team to schedule a free pick up.

Shopping for new appliances?

Energy Optimization offers cash incentives for qualifying ENERGY STAR® appliances. Visit our website for a complete list of savings opportunities

ONLINE: michigan-energy.org **PHONE:** 877-296-4319



Energy Optimization programs and incentives are applicable to Michigan electric service locations only. Other restrictions may apply. For a complete list of participating utilities, visit michigan-energy.org.

Presque Isle Electric & Gas Co-op

19831 M-68 Hwy • P.O. Box 308 • Onaway, MI 49765 • 989-733-8515 • 800-423-6634 • www.pieg.com

GAS EMERGENCY ONLY 1-800-655-8565

We will gladly accept your Visa, MasterCard, Discover or American Express. No additional charge for using your credit card.



Most natural gas rates and charges are not regulated by the Michigan Public Service Commission.