

The Spotlight

PIE&G
PRESQUE ISLE ELECTRIC AND GAS CO-OP



A Touchstone Energy Cooperative

What's Inside

- 75th Anniversary Celebration
- Appliance Recycling Program - \$30 Rebate
- Be Prepared For Spring Storms
- Residential Rate Comparison
- Home Heating Credits

March 2012



1937 - 2012

75TH ANNIVERSARY CELEBRATION

March 22nd

Presque Isle Electric & Gas Co-op was incorporated on March 22, 1937. To mark this occasion, we will be hosting an open house on March 22nd between 10:00 AM and 2:00 PM. Please stop by our office to enjoy some lite refreshments, a brief presentation, and a tour of our building.



The winners of the February drawing for a \$75 credit to their electric or natural gas account are:

Harriet Powers, Presque Isle, Lori Fielder, Indian River, Norman Pesonen, Lewiston
CONGRATULATIONS!

APPLIANCE RECYCLING REBATES

Before you kick that old appliance to the curb or let it run up your energy bill, consider a more convenient alternative. Door-to-door pick-up + a cash reward + free and safe recycling!

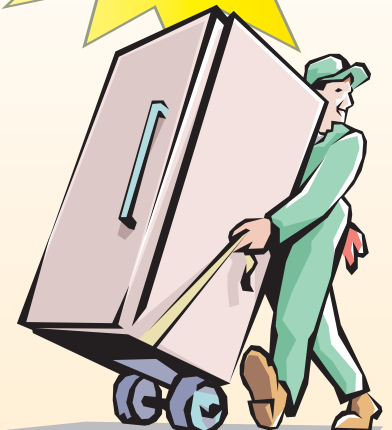
How it works:

Presque Isle Electric & Gas Co-op's Appliance Recycling program hauls away an old appliance, such as that ancient refrigerator in your garage, for FREE. You get a rebate check, we recycle your appliance, and you avoid all the hassles.

Your service provider is now offering a \$30 rebate for recycling an old refrigerator or freezer (limit 2).

Schedule a pick-up online at michigan-energy.org or call 877.296.4319

**\$30
REBATE**



Owned By Those We Serve . . . Locally Controlled . . . Committed to Community . . . Not For Profit



BE PREPARED FOR SPRING STORMS

Lightning from thunderstorms kills more people each year than tornadoes or hurricanes, according to the American Red Cross. As spring arrives, make sure you're prepared to handle storms that come with the changing season. Follow these tips from the Red Cross to stay safe.

Stay away from down power lines. Electricity could still be flowing through them. Report down power lines immediately to PIE&G at (800) 423-6634.

Hear thunder? Head inside. If you can hear it, you could be in danger from lightning. The National Weather Service recommends you stay indoors at least 30 minutes after the last clap of thunder. If you're outside and can't seek shelter indoors, avoid high ground, water, tall isolated trees, and metal objects like bleachers or fences.

Unplug your electronics. Avoid using electrical items and telephones, which can carry power surges. Keep a battery-powered TV or radio on hand for weather updates.

Delay outdoor activities. If conditions are right for a thunderstorm, postpone the baseball game and stay inside—it doesn't have to be raining for lightning to strike.

Assemble an emergency preparedness kit with

- Water—one gallon per person, per day
- Non-perishable food
- Flashlight
- Battery-powered or hand-crank radio (preferably NOAA weather radio) and extra batteries
- First-aid kit
- Seven-day medicine supply
- Copies of personal documents
- Cell phone with chargers
- Emergency contact information
- Cash

Source: American Red Cross

Residential Rate Comparison For MPSC-Regulated Electric Utilities*

As of February 1, 2012

COOPERATIVE	1,000 kWh Monthly Bill
Consumers Energy	\$126.41
Midwest Energy	\$127.90
Cloverland Electric	\$129.86
Great Lakes Energy	\$132.62
Detroit Edison/DTE	\$154.01

*This chart includes all regulated cooperatives in the State of Michigan and other Northeast Michigan utilities.

Source: Michigan Public Service Commission
www.dleg.state.mi.us/mpsc/electric/download/rates2.pdf

SCHOLARSHIP DEADLINE



The deadline for the PIE&G Communities First Fund scholarships is March 31, 2012.

HOME HEATING CREDITS

– PIE&G accepts 'Energy Drafts' issued to members eligible for a Home Heating Credit if it is used to pay a home heating bill and the name on the energy draft matches the name on the account. Both parties must sign to endorse payment if the draft is issued in two names. Visit www.michigan.gov/heatingassistance and click on Home Heating Credit for more information.

Presque Isle Electric & Gas Co-op

19831 M-68 Hwy • P.O. Box 308 • Onaway, MI 49765 • 989-733-8515 • 800-423-6634 • www.pieg.com

GAS EMERGENCY ONLY 1-800-655-8565

We will gladly accept your Visa, MasterCard, Discover or American Express. No additional charge for using your credit card.



TWN, long distance phone service and natural gas service are not regulated by the Michigan Public Service Commission.