

The Spotlight



A Touchstone Energy Cooperative

What's Inside

- Electric Rates Adjusted
- Snow Safety for Gas Customers
- Right of Way Clearing
- Hey, Co-op Teens!
- Energy Optimization Rebates

February 2013

Electric Rates Adjusted to Reflect Increased Supply Costs

In January Presque Isle Electric & Gas Co-op provided notice to the membership of some changes in your wholesale energy costs. These changes took effect on February 1, 2013.

Rates billed to members are made up of two components: a distribution charge and an energy charge. "Distribution" charges represent the cost to build and maintain the poles and wires used to deliver electricity to your home or business. "Energy" charges represent the cost of purchasing the electricity for resale to you.

There are then two components to the "energy" charge. The first "energy" component is the "base energy" charge that represents the EXPECTED long term cost of energy. The second "energy" component is the PSCR Factor (Power Supply Cost Recovery Factor). The PSCR allows your cooperative to make adjustments to the ACTUAL cost of "energy" on an annual basis.

On November 27, 2012 the Board of Directors approved a change to the base energy charge and the PSCR Factor to reflect our total energy costs. The "base energy" charge has not been adjusted since 2006 and was no longer a reasonable approximation of long term energy costs.

The table below shows how this affects your bill:

	Base Energy	PSCR	Total	
Energy before February 1	\$0.05650	\$0.02951	\$0.08601	<i>*This table demonstrates the Monthly Residential Rate; however, all rate classes will change in this similar fashion.</i>
Energy after February 1	\$0.08601	\$0.00319	\$0.08920	
Change *	\$0.02951	(\$0.02632)	\$0.00319	

This table indicates the increase in total energy costs of \$0.00319 per kWh. If your average consumption is 650 kWh per month, you will see a monthly increase of \$2.07.

Snow Safety for Gas Customers

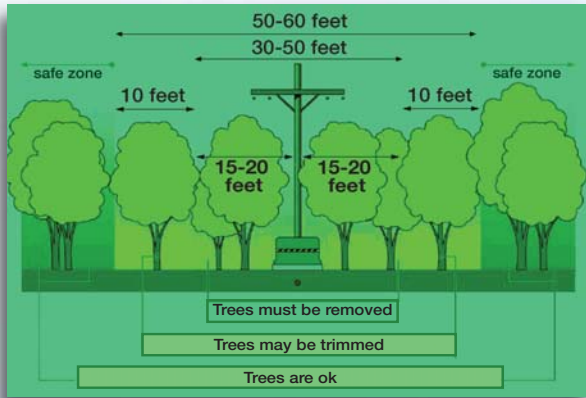
As winter lingers and snow accumulates, there are a few simple things you can do the next time you are outside to prevent future safety issues inside.

- Keep snow and ice clear from exhausts and air vents for gas appliances. This will prevent accumulation of carbon monoxide in buildings and operational problems for the combustion equipment.
- Monitor accumulation of snow and ice blocking regulator or relief valve vents which could prevent proper function. These vents are usually located on the meter or in the piping close to the meter. If ice build-up on your meter is a recurring problem consult the PIE&G for possible solutions.
- If possible, use a broom instead of a shovel to remove snow. Brooms will cause less damage to equipment and coatings.

Please contact PIE&G at (800) 655-8565 or emergency officials if there is a gas odor present or if gas appliances are not functioning properly. Leave the residence immediately if you detect a gas odor indoors or suspect carbon monoxide is present. Report the situation once when you are in a safe location.

Take care of these things now, and the next time it snows you can sit back and enjoy it.

Owned By Those We Serve . . . Locally Controlled . . . Committed to Community . . . Not For Profit



Right of Way Clearing

The 2013 vegetation management program begins this winter in parts of the PIE&G service area as private contractors remove trees and limbs near power lines. Keeping trees cleared within power line rights of way (ROW) helps PIE&G maintain safe and reliable electric service.

Members will be notified by letter if ROW clearing work is planned nearby. Questions about our ROW re-clearing program should be directed to our Member Services Department, at **800-423-6634**.

Hey, Co-op Teens!

Take a chance on fun and you might win a free trip to D.C.

The Michigan Electric Cooperative **Youth Leadership Summit** is designed to help young adults grow as leaders. This unique, high-energy event revolves around team-building and group learning.

The Youth Leadership Summit (YLS) takes place on April 24-26, 2013 at the Spring Hill Camp in Ewart (12 miles south of Cadillac). As a participant, you will take your team-building skills to the next level with a combination of hands-on classroom exercises and a high-ropes challenge (over 30 feet in the air!) that will test your team mentally and physically! Plus, you will learn how to respond in an emergency situation, explore diverse careers in energy, test your decision-making skills as an elected official, and ask a university representative what to expect as you prepare for life after high school.

YLS is the first step towards an even greater adventure – all participants will be considered for a once-in-a-lifetime Washington D.C. experience with the National Rural Electric Youth Tour. Learn more about YLS and Youth Tour at miYLS.com.

If you are a sophomore or junior (age 16 and 17 in 2013) and your family receives service from PIE&G, you are eligible to apply to the Youth Leadership Summit. Visit miYLS.com or contact Sharon at **(800) 423-6634**, ext 813 for an application. Applications are due by **March 22, 2013**.



WE SURVIVED DRACO 2012

Everyone at PIE&G extends sincere appreciation and thanks to all of our members for their patience and understanding during the late December storm. From the onset, Co-op staff, crews and contractors worked with utmost safety around the clock to restore electricity to our members as quickly as possible. Line crews and contractors will continue working to clean up and remove branches on lines in the coming weeks.

THANK YOU



SAVE ON.

You're in for a great new year. Our most popular Energy Optimization **REBATES** are back by popular demand! You can now choose from more than 50 easy ways to save energy at home or work.

- * **FREE** refrigerator recycling
- * **\$15 Rebate** Outdoor CFL light fixtures
- * **\$20 Rebate** ENERGY STAR dehumidifiers
- * **\$20 Rebate** ENERGY STAR refrigerators
- * **\$50 Rebate** Electric water heaters
- * **FREE** online home audit and energy-saving kit
- * **\$150 Rebate** ECM furnaces

ONLINE: michigan-energy.org PHONE: 877.296.4319



Energy Optimization programs and incentives are applicable to Michigan service locations only. Other restrictions may apply. For a complete list of participating utilities, visit michigan-energy.org.